

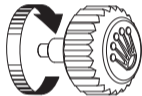
OYSTER PERPETUAL
YACHT-MASTER



ROLEX

WEARING THE WATCH FOR THE FIRST TIME

Before being worn for the first time, or if it has stopped, a Rolex watch must be wound manually in order to function correctly and precisely. To wind the watch manually, unscrew the winding crown completely, then turn it several times clockwise. (Turning in the other direction has no effect.) A minimum of 25 turns is required for adequate partial winding. The watch will then be wound automatically as long as it is worn on the wrist. Carefully screw the crown back down against the case to ensure waterproofness.



The green seal accompanying your Rolex watch is a symbol of its status as a Superlative Chronometer. This exclusive designation attests that it has successfully undergone a series of specific final controls by Rolex in its own laboratories in addition to the official COSC certification of its movement. This unique testing of its chronometric precision, waterproofness, self-winding and reliability pushes back the boundaries of performance and makes Rolex the benchmark for excellence in mechanical watches. For further information, please visit [rolex.com](https://www.rolex.com).



THE HEART OF THE YACHT-MASTER MODEL

THE WATCH OF THE OPEN SEAS 4-5

USING YOUR WATCH

OVERVIEW 6-7

SETTING THE OYSTER PERPETUAL YACHT-MASTER 8-11

ROLEX SERVICE

CARING FOR YOUR ROLEX 12-13

AFTER-SALES SERVICE 14-15

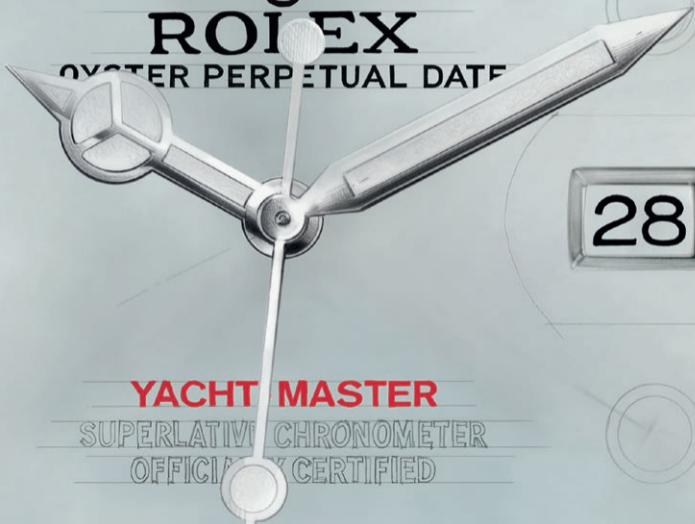
WORLDWIDE SERVICE NETWORK 16

ROLEX.COM



ROLEX

OYSTER PERPETUAL DATE



YACHT MASTER

SUPERLATIVE CHRONOMETER

OFFICIALLY CERTIFIED

THE WATCH OF THE OPEN SEAS

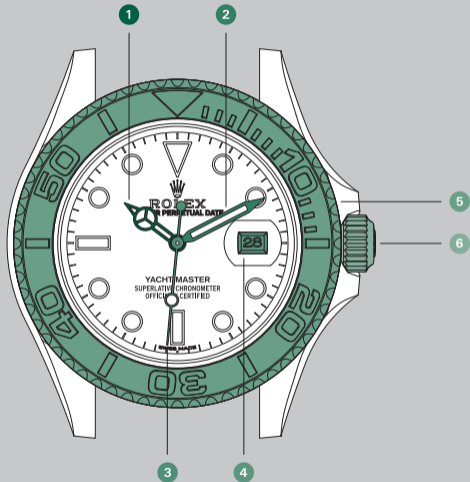
Elegant, sporty, and distinguished, the Oyster Perpetual Yacht-Master symbolizes the privileged ties between Rolex and the world of sailing. Its bidirectional rotatable 60-minute graduated bezel enables the wearer to easily calculate sailing time, for example between two buoys, or provide a reminder of elapsed time. The hands and hour markers, filled with a luminescent material, remain extremely legible in all situations. Its qualities make the watch an ideal instrument for yachting enthusiasts.

Guaranteed waterproof to a depth of 100 metres (330 feet), featuring a virtually scratchproof synthetic sapphire crystal and a crown guard crafted as an integral part of the middle case, the Oyster Perpetual Yacht-Master is available in several sizes.

Each model is equipped with a self-winding mechanical movement, entirely manufactured by Rolex. Depending on the model, the Oyster Perpetual Yacht-Master features an Oyster or Oysterflex bracelet with an Oysterlock safety clasp.

OVERVIEW

- 1 Hour hand
- 2 Minute hand
- 3 Seconds hand
- 4 Date window
- 5 Bidirectional rotatable bezel
- 6 Winding crown



SETTING THE OYSTER PERPETUAL YACHT-MASTER

Screwed-down position (*position 0*):

the crown is completely screwed down against the case. When the crown is in this position, the Oyster Perpetual Yacht-Master is guaranteed waterproof to a depth of 100 metres (330 feet).

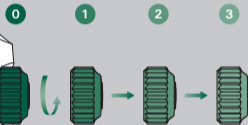
Manual winding (*position 1*):

the crown is unscrewed. To wind the watch manually, turn the crown clockwise; turning in the other direction has no effect. When setting the watch for the first time or after the watch has stopped, complete a minimum of 25 turns for partial winding.



Initial winding and setting

- Wind the watch manually (*see page 8*).
- Set the time by turning the hands clockwise and by noting the date change at midnight (*see pages 10-11*).
- Set the date (*see pages 10-11*).



Unscrew and then pull out

To screw the crown back down against the case, return it to *position 1* and apply light pressure on it while screwing it down clockwise against the case.

After every use, carefully screw the crown back down against the case to guarantee the waterproofness. The crown should never be unscrewed under water.

Setting the date (*position 2*):

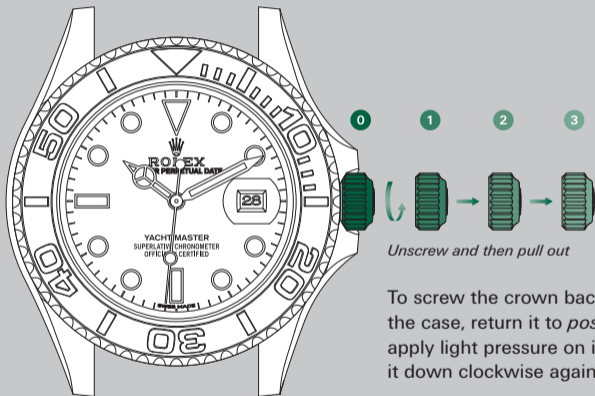
the crown is unscrewed and pulled out to the first notch.

To set the date, turn the winding crown clockwise or counterclockwise depending on the model. Turning in the other direction has no effect or will manually wind the watch.

During this operation, the watch continues to function.

Setting the time (*position 3*):

the crown is unscrewed and pulled out to the second notch. The seconds hand is stopped, allowing you to set the time to the precise second. To set the hour and minute, turn the crown in either direction. To avoid confusion between a.m. and p.m. hours, move the hour hand to 12 o'clock. If the date changes, it is midnight.



Unscrew and then pull out

To screw the crown back down against the case, return it to *position 1* and apply light pressure on it while screwing it down clockwise against the case.

After every use, carefully screw the crown back down against the case to guarantee the waterproofness. The crown should never be unscrewed under water.

CARING FOR YOUR ROLEX

Thanks to Rolex expertise, your watch will require very little day-to-day care.

You can help preserve its lustre by cleaning it occasionally with a microfibre cloth. You can also wash the case and bracelet from time to time using soapy water and a soft brush. After wearing your watch in the sea, it is important to rinse it with fresh water to remove any salt and sand deposits.

Before cleaning your watch, always ensure that the crown is screwed down properly against the case to guarantee waterproofness.

AFTER-SALES SERVICE

Rolex watch servicing ensures that your timepiece will continue to perform optimally and meet Rolex's stringent requirements of precision, reliability and waterproofness throughout its life.

The timekeeping accuracy of your watch is largely dependent on high-performance lubricants specially developed by Rolex to minimise friction and prevent wear of components. To guarantee continued accuracy and waterproofness, Rolex recommends that you periodically return your watch to an Official Rolex Retailer or Service Centre for professional servicing.

When your watch is serviced by a Rolex watchmaker, the watch is completely dismantled and all of its components are ultrasonically cleaned. Each individual component is closely examined and those that no longer meet Rolex's functional and aesthetic specifications are replaced with genuine Rolex parts. The movement is carefully lubricated then electronically tested to guarantee its timing accuracy; the case and the metal bracelet are meticulously refinished to restore their lustre. Your Rolex then undergoes a series of rigorous technical tests and checks

to guarantee its waterproofness, power reserve and precision.

After a complete Rolex service, your watch is covered by a service guarantee.

WORLDWIDE SERVICE NETWORK

The network of Official Rolex Retailers and Service Centres covers more than 100 countries around the world and draws on the expertise of highly skilled watchmakers, carefully selected and trained by Rolex.

Official Rolex Retailers can advise you on all the technical aspects of your watch's functions. Whether your bracelet needs sizing or it is time for a complete service, highly qualified Rolex watchmakers are on hand worldwide to meet all of your service needs.

For a list of Official Rolex Retailers and Service Centres, please visit: [rolex.com](https://www.rolex.com).

ROLEX.COM

We invite you to visit **rolex.com**,
a privileged place to learn more about
the functions of your Rolex watch
and about the quality, know-how and
fundamental values of the brand.

Welcome to the world of Rolex.

Rolex reserves the right to modify the models illustrated in this booklet at any time.

© Rolex SA, 3-5-7, rue François-Dussaud, 1211 Geneva 26, Switzerland
598.62 Eng - 3.2019 - Printed in Switzerland

[rolex.com](https://www.rolex.com)

