

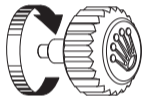
OYSTER PERPETUAL
SKY-DWELLER



ROLEX

WEARING THE WATCH FOR THE FIRST TIME

Before being worn for the first time, or if it has stopped, a Rolex watch must be wound manually in order to function correctly and precisely. To wind the watch manually, unscrew the winding crown completely, then turn it several times clockwise. (Turning in the other direction has no effect.) A minimum of 25 turns is required for adequate partial winding. The watch will then be wound automatically as long as it is worn on the wrist. Carefully screw the crown back down against the case to ensure waterproofness.



The green seal accompanying your Rolex watch is a symbol of its status as a Superlative Chronometer. This exclusive designation attests that it has successfully undergone a series of specific final controls by Rolex in its own laboratories in addition to the official COSC certification of its movement. This unique testing of its chronometric precision, waterproofness, self-winding and reliability pushes back the boundaries of performance and makes Rolex the benchmark for excellence in mechanical watches. For further information, please visit [rolex.com](https://www.rolex.com).



THE HEART OF THE SKY-DWELLER MODEL

THE CLASSIC TRAVELLERS' WATCH	4-5
DUAL TIME ZONE AND 24-HOUR DISPLAY	6-7
SAROS ANNUAL CALENDAR	8-9
RING COMMAND BEZEL	10-11

USING YOUR WATCH

OVERVIEW	12-13
SETTING THE OYSTER PERPETUAL SKY-DWELLER	14-23
EASYLINK COMFORT EXTENSION LINK	24-25

ROLEX SERVICE

CARING FOR YOUR ROLEX	26-27
AFTER-SALES SERVICE	28-29
WORLDWIDE SERVICE NETWORK	30

ROLEX.COM



ROLEX



SKY-DWELLER

OYSTER PERPETUAL
SUPERLATIVE CHRONOMETER
OFFICIALLY CERTIFIED

28

THE CLASSIC TRAVELLERS' WATCH

The Oyster Perpetual Sky-Dweller provides, in an unprecedented way, the information global travellers need to easily keep track of time: a dual time zone with local time read via centre hands and a reference time display in 24-hour format read via a disc, an innovative annual calendar named Saros, and a month display by means of 12 windows around the circumference of the dial. With its stately 42 mm case, it is the embodiment of perfect symbiosis between form and function.

The Oyster Perpetual Sky-Dweller's self-winding mechanical movement is entirely manufactured by Rolex and has a total of 380 components.

The Oyster Perpetual Sky-Dweller is equipped with an Oyster bracelet or leather strap with a folding Oysterclasp.

DUAL TIME ZONE AND 24-HOUR DISPLAY



Thanks to its innovative display and simple operation, the Oyster Perpetual Sky-Dweller allows the traveller to adjust the watch to different time zones during a journey, while benefiting from a constant, clear display of reference time.

When travelling, the wearer can read the reference time in 24-hour format via a rotating off-centre disc. A fixed red triangle on the dial points to the time.

Local time at the destination is indicated by the conventional centre hour, minute and seconds hands. It can be changed quickly and easily by jumps of the hour hand.

The date change is linked to local time. Thus, the date window always displays the current date in the wearer's local time zone.

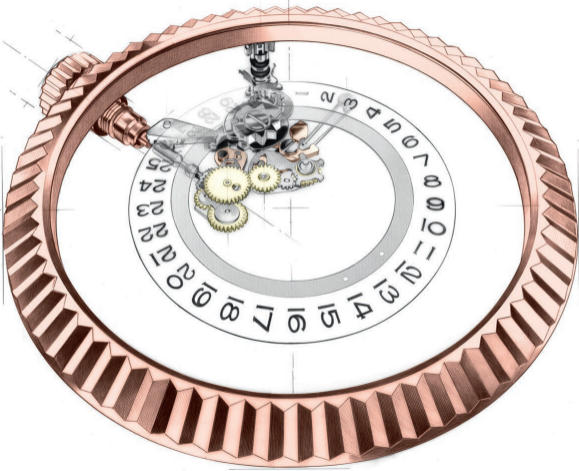
SAROS ANNUAL CALENDAR

The Oyster Perpetual Sky-Dweller has an extremely reliable annual calendar thanks to an ingenious mechanism named Saros, patented by Rolex, and whose unique design was inspired directly by the astronomical phenomenon of the same name.

This annual calendar automatically differentiates between 30-day and 31-day months. It displays the correct date throughout the year and requires only one adjustment a year – on 1st March, February having only 28 or 29 days.

The month is indicated by a contrasting colour in one of the 12 windows around the circumference of the dial: January at 1 o'clock, February at 2 o'clock, and so on.





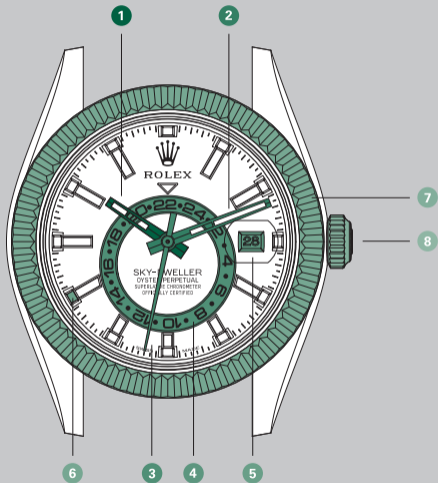
RING COMMAND BEZEL

The Oyster Perpetual Sky-Dweller is equipped with a rotatable Ring Command bezel which allows easy selection of the function to be set: date, local time or reference time.

The function selected can then be set quickly by turning the winding crown in either direction.

OVERVIEW

- 1 Hour hand
- 2 Minute hand
- 3 Seconds hand
- 4 Reference time display
on 24-hour disc
- 5 Date window
- 6 Month display by contrasting colour
in one of 12 windows
- 7 Rotatable Ring Command bezel
- 8 Twinlock winding crown



SETTING THE OYSTER PERPETUAL SKY-DWELLER

Screwed-down position (crown in *position 0*): the crown is completely screwed down against the case. When the crown is in this position, the Oyster Perpetual Sky-Dweller is guaranteed waterproof to a depth of 100 metres (330 feet).

Manual winding (crown in *position 1*): the crown is unscrewed. To wind the watch manually, turn the crown clockwise; turning in the other direction has no effect. When setting the watch for the first time or after the watch has stopped, complete a minimum of 25 turns for partial winding.



COMPLETE SETTING OF THE WATCH IS CARRIED OUT BY FOLLOWING THE STEPS IN THE ORDER GIVEN:

1. Setting the reference time (bezel in *position III*, crown in *position 2*):

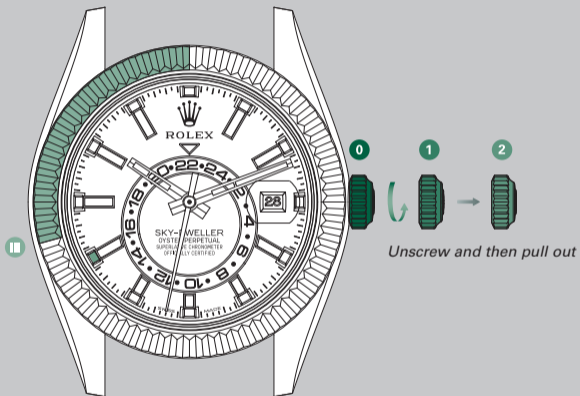
to set the reference time, follow the steps in the order given:

- Unscrew the crown and then pull it out to the first notch.
- Put the bezel in *position III* by turning it counterclockwise as far as it will go. The seconds hand is stopped, allowing you to set the time to the precise second.

- Set the hour on the 24-hour disc and the minutes shown by the centre minute hand by turning the crown in either direction.

Setting the reference time (hour on the 24-hour disc and minutes shown by the centre minute hand) also moves the hour hand (local time). For this reason, the reference time must be set before setting the local time.

Go to step 2 →



2. Setting the local time (bezel in *position II*, crown in *position 2*):

to set the local time, follow the steps in the order given:

- Put the bezel in *position II*.
- Set the local time (displayed by the jumping hour hand) by turning the crown in either direction. The 24-hour disc and the minute hand do not move. Only the hour hand moves in increments of one hour. The date changes when the hour hand passes midnight, only in the clockwise direction.

To avoid confusion between a.m. and p.m. hours, move the hour hand to 12 o'clock. If the date changes, it is midnight.

Go to step 3 →

3. Setting the month and the date (bezel in *position 1*, crown in *position 2*):

to set the month and the date, follow the steps in the order given:

- Put the bezel in *position 1*.
- Set the month by turning the crown in either direction. Cycle through the dates and months until you reach the current month, which is indicated by a contrasting colour in one of the 12 windows around the circumference of the dial: January at 1 o'clock, February at 2 o'clock... with December at 12 o'clock.

- Set the date of the current month by turning the crown in either direction until you reach the correct date.

The annual calendar automatically differentiates between 30-day and 31-day months. It requires only one adjustment a year – on 1st March, February having only 28 or 29 days.

- Return the bezel to the *neutral position* by turning it clockwise as far as it will go.
- Push in and screw down the crown.



Push in, then screw down

To screw the crown back down against the case, return it to *position 1* and apply light pressure on it while screwing it down clockwise against the case.

After every use, carefully screw the crown back down against the case to guarantee the waterproofness. The crown should never be unscrewed under water.

** The date shown here is 28 August*

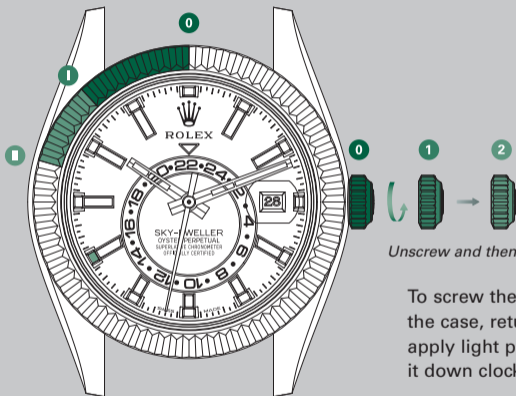
SETTING THE LOCAL TIME OR DATE ONLY:

to change only the local time or the date, follow the steps in the order given:

- Unscrew the crown and pull it out to the first notch.
- Go to step 2 (*see page 18*) or to step 3 (*see page 20*) depending on the function to be set.
- Push in and screw down the crown.

Additional information:

After setting, we recommend that you return the bezel to the *neutral position* to easily locate positions I, II and III the next time you set the watch.



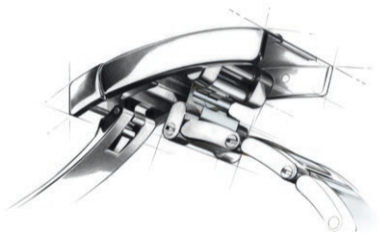
Unscrew and then pull out

To screw the crown back down against the case, return it to *position 1* and apply light pressure on it while screwing it down clockwise against the case.

After every use, carefully screw the crown back down against the case to guarantee the waterproofness. The crown should never be unscrewed under water.

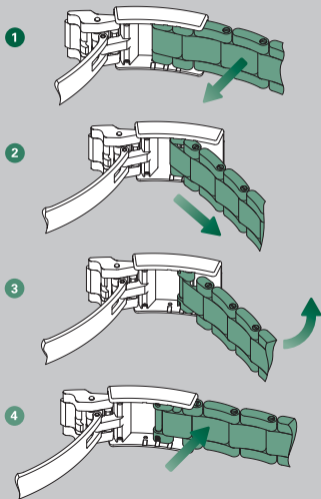
** The date shown here is 28 August*

EASYLINK COMFORT EXTENSION LINK

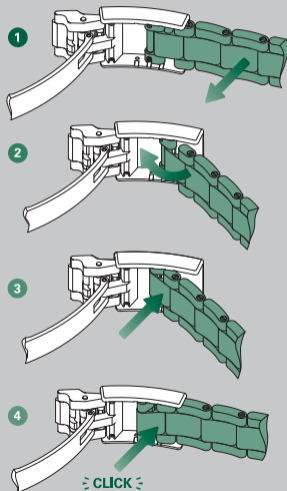


To ensure optimal comfort when wearing your watch in any circumstances, Rolex created the Easylink comfort extension link, which is available on some models. Its exclusive design, which was patented, allows you to adjust the length of your bracelet by 5 mm, without the need for tools.

Adjusting from the short position to the long position



Adjusting from the long position to the short position



CARING FOR YOUR ROLEX

Thanks to Rolex expertise, your watch will require very little day-to-day care.

You can help preserve its lustre by cleaning it occasionally with a microfibre cloth. You can also wash the case and bracelet from time to time using soapy water and a soft brush. After wearing your watch in the sea, it is important to rinse it with fresh water to remove any salt and sand deposits.

Before cleaning your watch, always ensure that the crown is screwed down properly against the case to guarantee waterproofness.

AFTER-SALES SERVICE

Rolex watch servicing ensures that your timepiece will continue to perform optimally and meet Rolex's stringent requirements of precision, reliability and waterproofness throughout its life.

The timekeeping accuracy of your watch is largely dependent on high-performance lubricants specially developed by Rolex to minimise friction and prevent wear of components. To guarantee continued accuracy and waterproofness, Rolex recommends that you periodically return your watch to an Official Rolex Retailer or Service Centre for professional servicing.

When your watch is serviced by a Rolex watchmaker, the watch is completely dismantled and all of its components are ultrasonically cleaned. Each individual component is closely examined and those that no longer meet Rolex's functional and aesthetic specifications are replaced with genuine Rolex parts. The movement is carefully lubricated then electronically tested to guarantee its timing accuracy; the case and the metal bracelet are meticulously refinished to restore their lustre. Your Rolex then undergoes a series of rigorous technical tests and checks

to guarantee its waterproofness, power reserve and precision.

After a complete Rolex service, your watch is covered by a service guarantee.

WORLDWIDE SERVICE NETWORK

The network of Official Rolex Retailers and Service Centres covers more than 100 countries around the world and draws on the expertise of highly skilled watchmakers, carefully selected and trained by Rolex.

Official Rolex Retailers can advise you on all the technical aspects of your watch's functions. Whether your bracelet needs sizing or it is time for a complete service, highly qualified Rolex watchmakers are on hand worldwide to meet all of your service needs.

For a list of Official Rolex Retailers and Service Centres, please visit: [rolex.com](https://www.rolex.com).

ROLEX.COM

We invite you to visit **rolex.com**,
a privileged place to learn more about
the functions of your Rolex watch
and about the quality, know-how and
fundamental values of the brand.

Welcome to the world of Rolex.

Rolex reserves the right to modify the models illustrated in this publication at any time.

© Rolex SA, 3-5-7, rue François-Dussaud, 1211 Geneva 26, Switzerland
668.22 Eng - 5.2018 - Printed in Switzerland

[rolex.com](https://www.rolex.com)

