

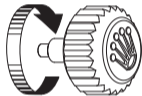
OYSTER PERPETUAL
EXPLORER II



ROLEX

WEARING THE WATCH FOR THE FIRST TIME

Before being worn for the first time, or if it has stopped, a Rolex watch must be wound manually in order to function correctly and precisely. To wind the watch manually, unscrew the winding crown completely, then turn it several times clockwise. (Turning in the other direction has no effect.) A minimum of 25 turns is required for adequate partial winding. The watch will then be wound automatically as long as it is worn on the wrist. Carefully screw the crown back down against the case to ensure waterproofness.



The green seal accompanying your Rolex watch is a symbol of its status as a Superlative Chronometer. This exclusive designation attests that it has successfully undergone a series of specific final controls by Rolex in its own laboratories in addition to the official COSC certification of its movement. This unique testing of its chronometric precision, waterproofness, self-winding and reliability pushes back the boundaries of performance and makes Rolex the benchmark for excellence in mechanical watches. For further information, please visit [rolex.com](https://www.rolex.com).



THE HEART OF THE EXPLORER II MODEL

THE EXPLORER'S WATCH 4-5

USING YOUR WATCH

OVERVIEW 6-7

SETTING THE OYSTER PERPETUAL EXPLORER II 8-15

EASYLINK COMFORT EXTENSION LINK 16-17

ROLEX SERVICE

CARING FOR YOUR ROLEX 18-19

AFTER-SALES SERVICE 20-21

WORLDWIDE SERVICE NETWORK 22

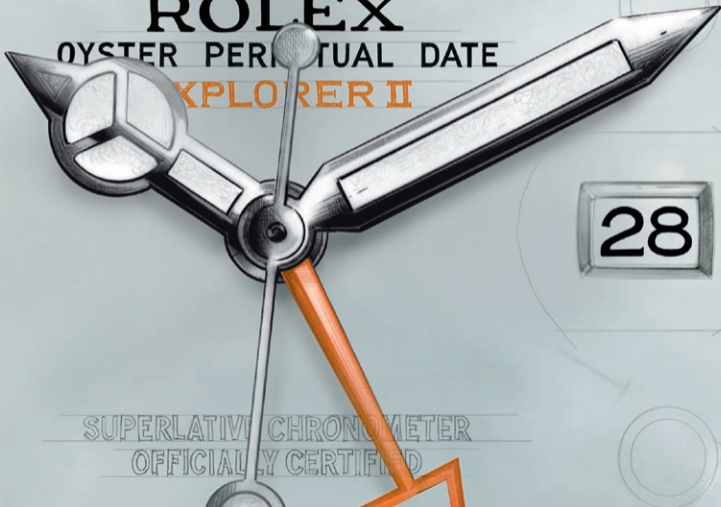
ROLEX.COM



ROLEX

OYSTER PERPETUAL DATE

EXPLORER II



SUPERLATIVE CHRONOMETER
OFFICIALLY CERTIFIED

THE EXPLORER'S WATCH

The Oyster Perpetual Explorer II is the watch of choice when adventure is second nature. Featuring a 24-hour display by means of an additional hand and a graduated fixed bezel, the watch allows the wearer to distinguish daytime from night-time hours or to read the time in two time zones simultaneously. Its 42 mm case, waterproof to a depth of 100 metres (330 feet), is a paragon of robustness. The Chromalight hour markers and hands are filled with a luminescent material emitting a long-lasting blue glow. Its winding crown is protected by a crown guard

that is an integral part of the middle case. The sapphire crystal, with a Cyclops lens, is virtually scratchproof.

The Oyster Perpetual Explorer II is equipped with a self-winding mechanical movement entirely manufactured by Rolex.

The Oyster Perpetual Explorer II features an Oyster bracelet with an Oysterlock safety clasp and the Easylink comfort extension link.

OVERVIEW

- 1 Hour hand
- 2 Minute hand
- 3 Seconds hand
- 4 24-hour hand
- 5 Date window
- 6 24-hour graduated fixed bezel
- 7 Twinlock winding crown



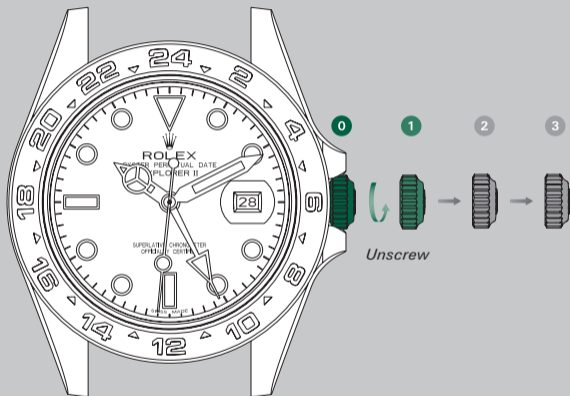
SETTING THE OYSTER PERPETUAL EXPLORER II

Screwed-down position (*position 0*):

the crown is completely screwed down against the case. When the crown is in this position, the Oyster Perpetual Explorer II is guaranteed waterproof to a depth of 100 metres (330 feet).

Manual winding (*position 1*):

the crown is unscrewed. To wind the watch manually, turn the crown clockwise; turning in the other direction has no effect. When setting the watch for the first time or after the watch has stopped, complete a minimum of 25 turns for partial winding.



COMPLETE SETTING OF THE WATCH IS CARRIED OUT BY FOLLOWING THE TWO STEPS IN THE ORDER GIVEN:

1. Setting the reference time (crown in *position 3*):

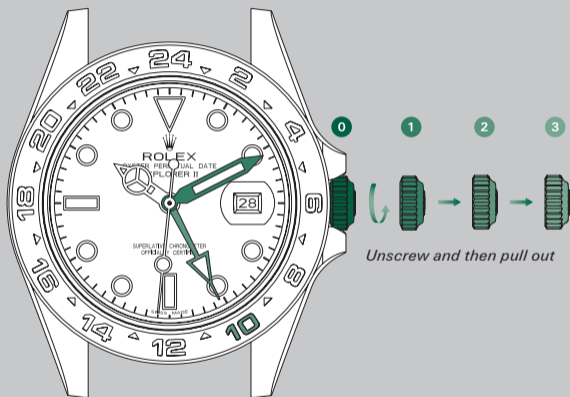
To set the reference time, follow the steps in the order given:

- Unscrew the crown and then pull it out to the second notch. The seconds hand is stopped, allowing you to set the time to the precise second.

- Set the reference time using the 24-hour hand (against the graduations on the bezel) and the minute hand (against the graduations on the dial) by turning the crown in either direction.

Setting the reference time also moves the conventional hour hand (local time). For this reason, the reference time must be set before setting the local time.

Go to step 2 →



**Reference time, Geneva, 10.10 a.m.*

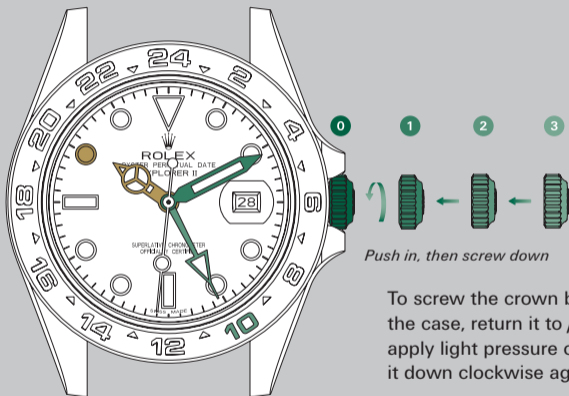
2. Setting the date and the local time (crown in *position 2*):

To set the date and the local time, follow the steps in the order given:

- Pull the crown out to the first notch.
- Set the date by turning the crown in either direction. The hour hand moves in increments of one hour. The date changes when the hour hand passes midnight, in either direction, after two full turns around the dial.

- Set the local time by turning the crown in either direction. The hour hand moves in increments of one hour. Be aware of the difference between noon and midnight (the date changes as the hour hand passes midnight).
- Push in and then screw down the crown.

The local time is identical to the reference time (24-hour hand) if the wearer is currently located in his reference zone. It can be easily adjusted when travelling.



Push in, then screw down

To screw the crown back down against the case, return it to *position 1* and apply light pressure on it while screwing it down clockwise against the case.

**Reference time, Geneva, 10.10 a.m. (24-hour format to distinguish daytime hours from night-time hours)
Local time, Geneva, 10.10 a.m. (conventional format)*

After every use, carefully screw the crown back down against the case to guarantee the waterproofness. The crown should never be unscrewed under water.

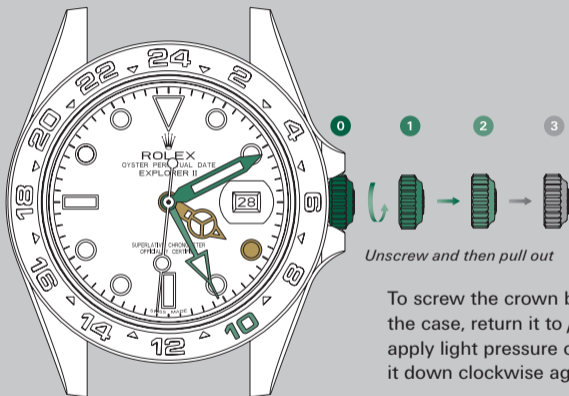
ADJUSTING THE LOCAL TIME

(crown in *position 2*):

When travelling, to adjust the local time only (without affecting the 24-hour reference time display), follow the steps in the order given:

- Unscrew the crown and then pull it out to the first notch.

- Set the local time by turning the crown in either direction. The hour hand moves in increments of one hour. The date is linked to local time and changes automatically when the hour hand passes midnight.
- Push in and then screw down the crown.



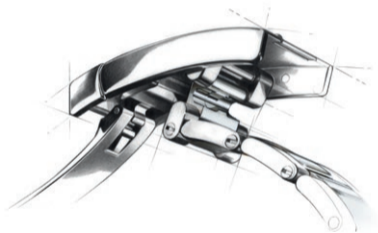
Unscrew and then pull out

To screw the crown back down against the case, return it to *position 1* and apply light pressure on it while screwing it down clockwise against the case.

After every use, carefully screw the crown back down against the case to guarantee the waterproofness. The crown should never be unscrewed under water.

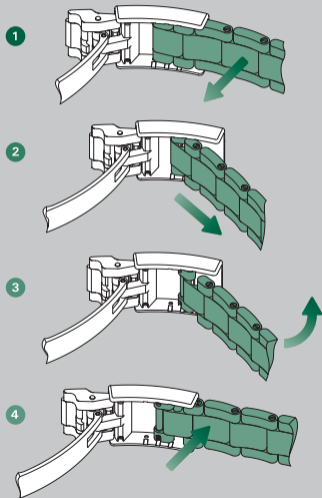
**Reference time, Geneva, 10.10 a.m.
Local time, New York, 4.10 a.m.*

EASYLINK COMFORT EXTENSION LINK

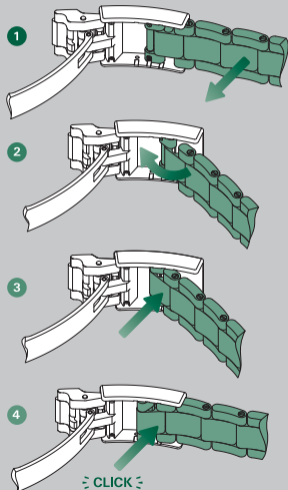


To ensure optimal comfort when wearing your watch in any circumstances, Rolex created the Easylink comfort extension link, which is available on some models. Its exclusive design, which was patented, allows you to adjust the length of your bracelet by 5 mm, without the need for tools.

Adjusting from the short position to the long position



Adjusting from the long position to the short position



CARING FOR YOUR ROLEX

Thanks to Rolex expertise, your watch will require very little day-to-day care.

You can help preserve its lustre by cleaning it occasionally with a microfibre cloth. You can also wash the case and bracelet from time to time using soapy water and a soft brush. After wearing your watch in the sea, it is important to rinse it with fresh water to remove any salt and sand deposits.

Before cleaning your watch, always ensure that the crown is screwed down properly against the case to guarantee waterproofness.

AFTER-SALES SERVICE

Rolex watch servicing ensures that your timepiece will continue to perform optimally and meet Rolex's stringent requirements of precision, reliability and waterproofness throughout its life.

The timekeeping accuracy of your watch is largely dependent on high-performance lubricants specially developed by Rolex to minimise friction and prevent wear of components. To guarantee continued accuracy and waterproofness, Rolex recommends that you periodically return your watch to an Official Rolex Retailer or Service Centre for professional servicing.

When your watch is serviced by a Rolex watchmaker, the watch is completely dismantled and all of its components are ultrasonically cleaned. Each individual component is closely examined and those that no longer meet Rolex's functional and aesthetic specifications are replaced with genuine Rolex parts. The movement is carefully lubricated then electronically tested to guarantee its timing accuracy; the case and the metal bracelet are meticulously refinished to restore their lustre. Your Rolex then undergoes a series of rigorous technical tests and checks

to guarantee its waterproofness, power reserve and precision.

After a complete Rolex service, your watch is covered by a service guarantee.

WORLDWIDE SERVICE NETWORK

The network of Official Rolex Retailers and Service Centres covers more than 100 countries around the world and draws on the expertise of highly skilled watchmakers, carefully selected and trained by Rolex.

Official Rolex Retailers can advise you on all the technical aspects of your watch's functions. Whether your bracelet needs sizing or it is time for a complete service, highly qualified Rolex watchmakers are on hand worldwide to meet all of your service needs.

For a list of Official Rolex Retailers and Service Centres, please visit: [rolex.com](https://www.rolex.com).

ROLEX.COM

We invite you to visit **rolex.com**,
a privileged place to learn more about
the functions of your Rolex watch
and about the quality, know-how and
fundamental values of the brand.

Welcome to the world of Rolex.

Rolex reserves the right to modify the models illustrated in this booklet at any time.

© Rolex SA, 3-5-7, rue François-Dussaud, 1211 Geneva 26, Switzerland
597.02 Eng - 5.2019 - Printed in Switzerland

[rolex.com](https://www.rolex.com)

